

# Wangen Progressive Cavity Pumps



Agriculture Range



# About Wangen

## Wangen brings over 50 years of experience in progressive cavity pumps.

Trusted globally in agriculture, industry, and wastewater, Wangen pumps are built to perform where failure isn't an option.

For dairy operations, handle abrasive slurries and fibrous effluent, and distribution of treated effluent for irrigation or land application. That have a deserved reputation for low-wear, energy efficiency and reliability.

Wangen PC pumps' low operating speed and unique modular design mean they require less hands-on management and maintenance.

If you are looking for dependable, energy-efficient performance season after season, think Wangen.



**Built to last.  
Backed by engineering.**



Designed for low maintenance and long service life



Built for low-speed operation to reduce wear



Easy to service without removing pipework



Handles thick, fibrous, and abrasive media with ease



Available in a range of sizes and configurations

# KL-Series Progressive Cavity Pumps

## Flagship PC pump for agricultural use.

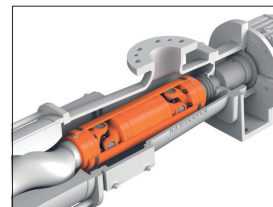
It's built for continuous, reliable operation in demanding conditions – like effluent transfer, slurry, and other abrasive or fibrous materials.

### Applications:

- Effluent Irrigation
- Slurry pumping
- Dairy shed waste systems
- Feed systems

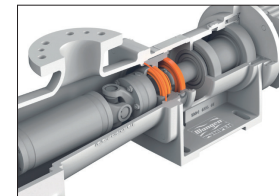


Performance designed in every detail.



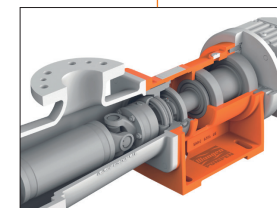
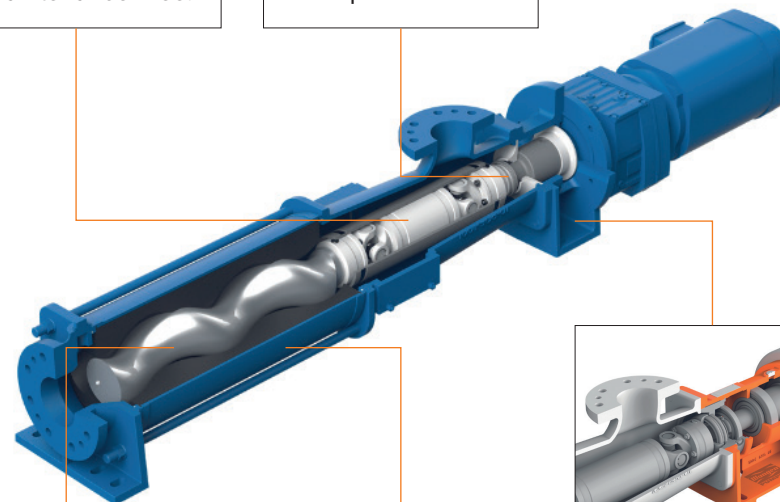
### Cardan shaft

- Bearings with lifetime lubrication.
- Maintenance-free.



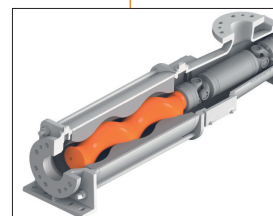
### Oil-filled cartridge mechanical seal

- Quick and easy to replace.



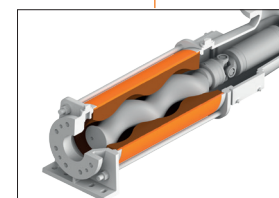
### Bearing housing and bearings

- Designed to absorb all thrust loads.
- Allows easy rear extraction of motor and gearbox for servicing.



### Rotor

- Hardened steel rotor.
- Manufactured in Germany.



### Stator

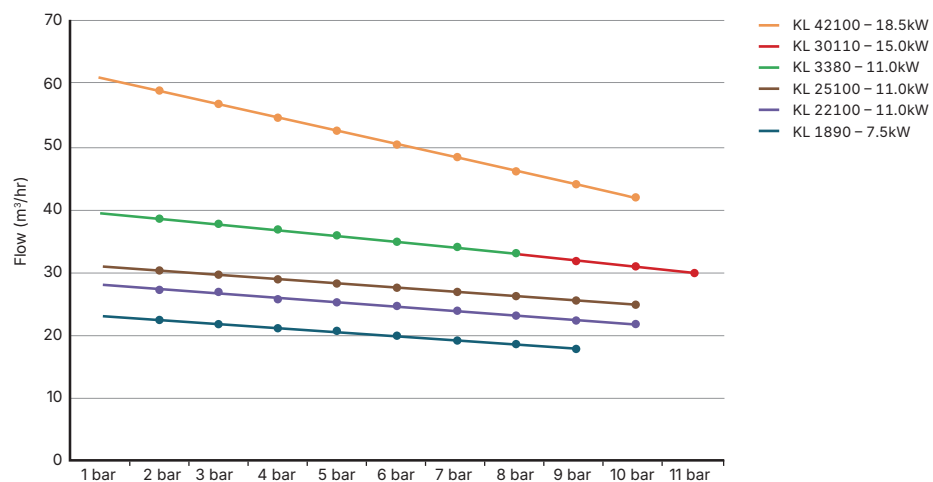
- Comes standard in NBR.
- Manufactured in Germany.

# KL-Series Progressive Cavity Pumps

## Specifications

Model	Power (kW)	Speed (RPM)	Max Pressure (bar)	Max Flow (m <sup>3</sup> /hr)
KL 1890	7.5	155	9	23
KL 22100	11.0	178	10	28
KL 25100	11.0	213	10	31
KL 3380	11.0	246	8	39
KL 30110	15.0	221	11	39
KL 42100	18.5	260	10	60

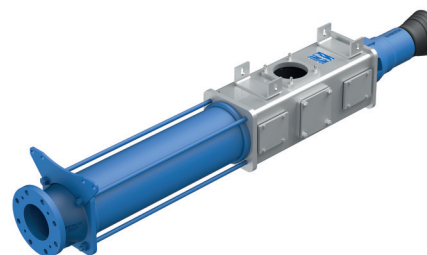
## Performance



# Other Wangen pump options

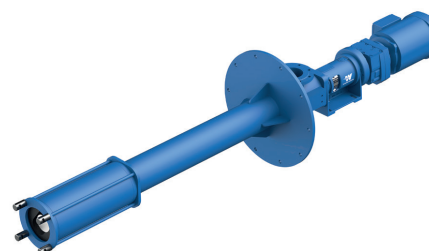
## PTO Progressive Cavity Pump

Tractor-driven for mobile or remote effluent transfer – ideal where fixed power isn't available.



## Immersion Progressive Cavity Pump

Mounts directly into tanks or pits – compact, efficient, and suited to deep or confined installations.



# Contact

Available in New Zealand from:  
**Prime Fluid Management**

**Greymouth**  
(Head Office)  
10 Chesterfield St

**Auckland**  
13b McLaughlins Rd  
Wiri

**Tauranga**  
43 Poturi Street  
Tauriko

**Wellington**  
2a Raiha St, Elsdon  
Porirua

**Christchurch**  
Unit C1, 198 Springs Rd  
Hornby

**Hawke's Bay**  
97 Austin Street  
Onekawa, Napier

0800 482 747  
[info@primefluid.co.nz](mailto:info@primefluid.co.nz)  
[primefluid.co.nz](http://primefluid.co.nz)