



Civil Sales and Hire

Pump Handbook

Contents

Our Process 4

The PRIME Project Delivery Pathway 4

Dewatering, Bypass and Sewage Pumps 6

Vacuum Prime 7

Wellpointing Piston 11

Trash 13

Submersible 14

High Head 16

Sludge and Slurry Pumps 23

Air-operated 24

Submersible 25

Environmental 29

Settlement Tanks 30

Lamella Clarifiers and Water Quality Services 31

Generators 33

Accessories 34

Road and Driveway Ramps 36

Wellpoints 37

Steel Wells 38

Pipes and Hoses 39

Sewer Plugs and Sound Barriers 40

Fittings and Adapters 41

Welcome to Prime Fluid Management

From puddle suckers and contractor's pumps to large-scale dewatering or sewer bypass set-ups, Prime Fluid Management delivers fit-for-purpose solutions to the civil industry. We understand the pressures you face to dewater safely and reliably, and to ensure site water complies with your discharge consent.

Every situation, at every scale

Prime Fluid Management operates across the country, on projects big and small. Our team is used to dealing with complex sites and compliance obligations. We provide our field team with extensive training, including electrical and Cirtex chemical-management certification.

When it comes to water and sewage, our aim is simple: support you to deliver your project to a high standard, on budget and on time.

Get in touch with us today.

Our Process

The PRIME Project Delivery Pathway

Prime Fluid Management operates a robust project delivery process, ensuring timely, cost-effective, and realistic project plans through the PRIME Project Delivery Pathway.



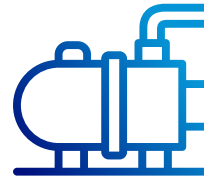
Discover

We take a take time to understand your project and to gain a solid understanding your goals, drivers and constraints.



Design

Every client, site and project is unique. We focus on the solution that will perform best in all scenarios across the intended lifetime of your project.



Deliver

Once approved, we deliver. Depending on project or product requirements this may include install, commissioning, and on-site training.



Support

We are here if you need us. Whether you need parts, repairs, or further support we work fast to limit downtime on site.

Dewatering, Bypass and Sewage Pumps



3" & 4" Vacuum Prime Pumps

These compact BBA pumps are ultra fuel-efficient, with some models using just 1.5l of diesel per hour and running up to 10 days on a single fuel tank. Their low weight and compact size make them ideal for mobile applications. The best-selling BA100K is widely considered to be the best performing mobile pump in its class, handling solids up to 82mm – offering no risk of clogging even in the dirtiest sewage systems.



BBA Pumps
BA100K D193

Max flow: 28 – 74 L/s	Head: 15m – 35m	Galvanised frame and HDPE doors	4 year BBA factory warranty
Weight: 875kg – 1600kg	Drive: • Hatz Diesel • Perkins Diesel • Electric	Central lifting point	Options: • Trailer unit • Silenced lockable canopy • Float start / stop
Solids: 42 – 82mm			

Model	BBA BA75 Diesel	BBA BA100K Diesel	BBA BA100E Diesel	BBA BA100K Electric	BBA BA100E Electric
Type	Vacuum Prime	Vacuum Prime	Vacuum Prime	Vacuum Prime	Vacuum Prime
Max Flow (L/s)	28	53	74	36	74
Max Head (m)	17	22	42	15	21
Max Solids (mm)	42	82	80	82	80
Engine Drive	Hatz Diesel	Hatz Diesel	Perkins Diesel	Electric	Electric
Weight (kg)	875	1450	1600	1100	1300
Canopy/Frame	Silenced	Silenced	Silenced	Silenced Canopy	Silenced canopy
Application(s)	Dewatering, water & sewer bypass				

6" Vacuum Prime Pumps

Our popular 6" diesel driven dewatering pumps are best suited for sewer bypassing and dewatering projects, with flows up to 132 L/s and heads of up to 38m. Their unique pump performance curves and ability to handle large solids make them particularly versatile, and the silenced lockable canopy offers minimal disturbance to nearby residents.



BBA Pumps
BA150E D285

Max flow:
132 L/s

Weight:
1600kg

Solids:
80mm

Head:
38m

Max noise level:
61 db at full rpm

Drive:
• Perkins Diesel
• Electric

**Galvanised
frame and
HDPE doors**

**Central lifting
point**

**4 year BBA
factory
warranty**

Options:
• Trailer unit
• Silenced
lockable
canopy
• Float start /
stop

Model	BA150E	BA150E Electric
Type	Vacuum Prime	Vacuum Prime
Max Flow (L/s)	132	132
Max Head (m)	38	37
Max Solids (mm)	80	80
Engine Drive	Perkins Diesel	Electric 37kW, VFD
Weight (kg)	1600	1600
Canopy/Frame	Silenced	Silenced
Application(s)	Dewatering, water & sewer bypass	

8" Vacuum Prime Pumps

These larger BBA BA180 pumps are suited for higher flow dewatering and bypassing applications. They are ideal for moving dirty water and sewage, with flows of up to 735 m³/h. These units are very compact for the amount of water they shift, and can still be towed by class 1 vehicle. In addition to being fuel efficient and versatile, these pumps are equipped with all possible safety features, including automatic level control in order to cope with changing water supply.



BBA Pumps
BA180E D315

Max flow:
217 L/s

Weight:
2100kg

Solids:
80mm

Head:
50m

Max noise level:
67 db at full rpm

Drive:
• Perkins Diesel
• Electric

**Galvanised
frame and
HDPE doors**

**Central lifting
point**

**4 year BBA
factory
warranty**

Options:
• Trailer unit
• Silenced
lockable
canopy
• Float start /
stop

Model	BA180 Diesel	BA180 Electric
Type	Vacuum Prime	Vacuum Prime
Max Flow (L/s)	217	172
Max Head (m)	50	32
Max Solids (mm)	80	80
Engine Drive	Perkins Diesel	Electric
Weight (kg)	2100	1700
Canopy/Frame	Silenced Canopy	Silenced Canopy
Application(s)	Dewatering, water & sewer bypass	

12" Vacuum Prime Pumps

Our range of 12" pumps are suited for larger dewatering and bypass pumping applications, with flows of up to 403 L/s. The low pressure BA300E pumpset is specially designed for flood control and sewage bypass pumping where only a limited head is needed. Thanks to the fully mechanical MP100 vacuum system, the pump primes quickly – even without liquid in the pump casing. In addition, our 12" portable pumpset uses clip-together pipework for rapid installation / commissioning.



BBA Pumps
BA300E D328

Max flow:
403 L/s

Weight:
1500kg – 5300kg

Solids:
120mm x 105mm

Head:
48m

Max noise level:
78 db at full rpm

Drive

- Perkins Diesel
- Volvo Penta Diesel
- PTO Tractor Drive

Galvanised frame and HDPE doors

Central lifting point

4 year BBA factory warranty

Options:

- Float start / stop

Model	BBA BA300 D328 Diesel	BBA BA300 D388 Diesel	BBA B300 PTO
Type	Vacuum Prime	Vacuum Prime	Self Priming
Max Flow (L/s)	348 L/s	403 L/s	334 L/s
Max Head (m)	19	48	14
Max Solids (mm)	120 x 105	120 x 105	70
Engine Drive	Perkins Diesel	Perkins Diesel	PTO Tractor Drive
Weight (kg)	3400	5100	1500
Canopy/Frame	Silence Canopy	Silence Canopy	Base frame & support stands
Application(s)	Dewatering, water & sewer bypass		

Wellpointing Pumps

Our BBA Piston Pumps are specifically designed for wellpointing. They are lockable, compact and extremely efficient to use, with a max diesel consumption of 1.5L per hour. They can run dry indefinitely.



BBA Pumps
PT130

The most popular choice is the best-selling PT150 – a wellpoint dewatering pump from the PT series, widely regarded as the best guarantee for a cost effective dry construction pit. Its fuel and maintenance costs are extremely low, and the product life is measured in decades.

Max flow:
132 L/s

Weight:
950kg – 1700kg

Solids:
80mm

Head:
38m

Max noise level:
64 db

Drive:

- Perkins Diesel
- Hatz Diesel
- Electric 1PH & 3PH

Run dry indefinitely without damage or wear

Galvanised frame and HDPE doors

4 year BBA factory warranty

Model	BBA PT130	BBA PT150	BBA PT150 Electric	BBA BA150E MP100
Type	Piston Pump	Piston Pump	Piston Pump	Twin Vacuum Prime
Max Flow (L/s)	10	25	25	132
Max Head (m)	20	20	20	38
Max Solids (mm)	Fine	Fine	Fine	80
Engine Drive	Diesel	Diesel	Electric	Perkins Diesel
Weight (kg)	950	1700	1600	1600
Canopy/Frame	Silenced canopy	Silenced canopy	Open Frame	Silenced
Application(s)	Wellpoint dewatering Only			Wellpoint Dewatering & Bypass pumping / Sewer

3"- 4" Handy, Trash and Diaphragm Pumps

Compact and lightweight, our range of easy-to-handle trash pumps are particularly useful where dewatering is intermittent, and pumps are not required to run for long periods of time. They are ideal for eliminating water from construction sites, flooded areas and any other de-watering needs.



Flexi Drive 3"

Max flow:

10 – 39 L/s

Weight:

54 – 110kg

Solids:

28 – 60mm

Head:

14 – 32m

Drive:

- Petrol
- Electric

Easy to transport

Built tough

to handle dirty & abrasive liquids

Options:

- Trash, diaphragm and flexi-drive pumps available
- Mounted in protective carry frame

Model	Caffini Diaphragm 3"	Caffini Trash 3"	Flexi Drive 3"	Caffini Diaphragm 4"	Caffini Trash 4"
Type	Diaphragm	Trash	Flexi-Drive	Diaphragm	Trash
Max Flow (L/s)	10	26	18	28	39
Max Head (m)	14	30	26	15	32
Max Solids (mm)	50	38	28	60	40
Engine Drive	Petrol Electric	Petrol	Petrol	Petrol Electric	Honda Petrol
Weight (kg)	54	79	54	85	110
Canopy/Frame	Site cart	Carry/ protection frame	Carry / protection frame	Site cart	Carry/ protection frame

2" Submersible Pumps

The 2" Submersible Pump is one of the most trusted dewatering pumps found on construction and civil sites. It's best used for small-scale sump pumping and dewatering excavations where power is available, and water volumes are low. Often used for pumping ground water out of footings prior to concrete, and pumping water to our Envirohubs ready for treatment. The 2" Submersible is lightweight, highly efficient and features run-dry technology for low maintenance.



Grindex Micro

Max flow:

4 – 11 L/s

Weight:

7.5kg – 35kg

Solids:

9mm

Head:

11 – 26m

Drive:

Electric

Diameter:

185mm – 258mm

Options:

- Single or three-phase
- Run-dry (Grindex models only)
- Float start/stop
- Compatible with Prime Pump generators

Model	Grindex 2"	Proril SMART 2"	Proril TANK 2"
Max Flow (L/s)	6-11	4 - 5.5	6 - 8
Max Head (m)	16-18	11-16m	20 - 26m
Max Solids (mm)	5-7.5	5.5-7mm	9mm
Drive	Electric 1 & 3 ph	Electric 1 ph	Electric 1 ph
Power (kW)	0.9-1.4	0.4-0.75	1.5-2.2
Weight (kg)	14.5 - 21.5	7.5-13kg	33-35 kg
Diameter	185 - 200	205-254mm	258mm
Application(s)	Dewatering	Dewatering	Dewatering

3" Submersible Pumps

The 3" Submersible Pump is suited to a range of different applications, from low head trench dewatering and sump-pumping to high head open-pit dewatering. The 3" Submersible is lightweight, highly efficient and features run-dry technology for low maintenance. It also features a star-delta starter built into the pump head for Master SH.



Grindex Minette

Max flow:

16 – 27 L/s

Weight:

29kg – 128kg

Solids:

76mm

Head:

15 – 32m

Drive:

Electric

Diameter:

240mm – 580mm

Options:

- Single or three-phase
- Run-dry (Grindex models only)
- Float start/stop
- Compatible with Prime Pump generators
- Star-delta starter (some models)

Model	Grindex 3"	Proril TANK 3"	Proril TITAN 3"	Proril GOMAX 3"
Max Flow (L/s)	16	11-16	20-27	25
Max Head (m)	22	15-32	15-21	21
Max Solids (mm)	9	9-10	25	76
Drive	1 & 3ph	Electric 3ph	Electric 3ph	Electric 3ph
Power (kW)	1.5-2.2	1.5-5.5	3.7-5.5	3.7
Weight (kg)	29	33-60	113-128	94
Diameter	240	272-306	382-412	580
Application(s)	Dewatering	Dewatering	Dewatering	Sewage

4" Submersible Pumps

The 4" Submersible Pump is again one of the most trusted dewatering pumps found on construction and civil sites. It's suited to a range of different applications, primarily where flows between 20 – 75 L/s are required and where reliability and easy handling are essential. These submersibles are lightweight, highly efficient and some feature run-dry technology for low maintenance. The Proril GOMAX submersibles are specifically designed to handle contaminated water, pH 5-8, and water containing relatively abrasive solids.



Grindex Major

Max flow:

20 – 75 L/s

Weight:

42kg – 256kg

Solids:

76mm

Head:

20 – 48m

Drive:

Electric (3ph)

Diameter:

273mm – 808mm

Options:

- Run-dry (Grindex models only)
- Float start/stop
- Compatible with Prime Pump generators

Model	Grindex 4" range	Proril TANK 4"	Proril GOMAX 4"
Max Flow (L/s)	34-39	20-29	36-75
Max Head (m)	21-28	28-48	20-42
Max Solids (mm)	10mm	10-15	76
Drive	Electric 3ph	Electric 3ph	Electric 3ph
Power (kW)	4.4 - 6.6	3.7-11	3.7-22
Weight (kg)	50	42-135	97-256
Diameter	286	273-354	589-808
Application(s)	Dewatering	Dewatering	Sewage

6" Submersible Pumps

The 6" Submersible Pump is best suited to larger dewatering and bypass pumping applications where flows between 36 – 95 L/s are required. Again, the Proril GOMAX submersibles are specifically designed to handle contaminated water, pH 5-8, and water containing relatively abrasive solids.



Grindex Matador

Max flow:
36 – 95 L/s

Head:
22 – 50m

Weight:
80kg – 350kg

Drive:
Electric (3ph)

Solids:
76mm

Diameter:
317mm – 867mm

Options:

- Single or three-phase
- Run-dry (Grindex models only)
- Float start/stop
- Compatible with Prime Fluid Mangement generators
- Star-delta starter (some models)

Model	Grindex 6" Range	Proril TANK 6"	Proril TITAN 6"	Proril GOMAX 6"
Max Flow (L/s)	56-95	36 - 53	62 - 85	70 - 95 L/s
Max Head (m)	38-40	26 - 50	22 - 30	30 - 42m
Max Solids (mm)	10-12	15 - 20	35	76mm
Drive	Electric 3 ph	Electric 3 ph	Electric 3 ph	Electric 3 ph
Power (kW)	11.7-20	7.5 - 22	11 - 22	11 - 22
Weight (kg)	80-133	97 - 259	196 - 350	175 - 262kg
Diameter	346-395	317 - 424	479 - 592	813 - 867mm
Application(s)	Dewatering	Dewatering	Dewatering	Sewage

8" Submersible Pumps

Our largest submersibles, the 8" Submersible Pump range are suited to dewatering and bypass pumping applications where flows between 90 – 155 L/s are required. Again, these pumps are lightweight and highly efficient.



Grindex Mega

Max flow:
90 – 155 L/s

Head:
24 – 55m

Weight:
285kg – 540kg

Drive:
Electric (3ph)

Solids:
10 – 30mm

Diameter:
510mm – 750mm

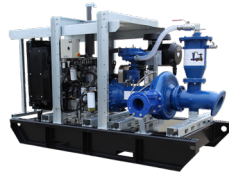
Options:

- Single or three-phase
- Run-dry (Grindex models only)
- Float start/stop
- Compatible with Prime Fluid Mangement generators

Model	Grindex 8" Range	Proril TANK 8"	Proril TITAN 8"
Max Flow (L/s)	145-155	90 - 97	105
Max Head (m)	50m	50 - 55	24
Max Solids (mm)	12mm	10	30
Drive	Electric 3ph	Electric 3ph	Electric 3ph
Power (kW)	37-57	37 - 45	22kW
Weight (kg)	285-540	510 - 530	350
Diameter	510-750	532	592
Application(s)	Dewatering	Dewatering	Dewatering

High Head Vacuum Prime Pumps

Prime Pump High Head Pumps are best used on more challenging sites where height, distance and environmental complexity demand alternative solutions. The BA80H model is a compact, mobile high head pump with a duty point of 100 m³/h @ 100 mwc. Dry self-priming, diesel-driven and with a sound attenuated canopy, this pump can be used in a variety of applications such as tank cleaning, fire fighting, construction, and jetting wellpoint filters.



Axis HP400
200×150

Max flow: 55 –198 L/s	90 – 100m	Meets highest emission standards
Weight: 1080kg – 3050kg	Drive: Diesel	
Solids: 16 – 30mm	Vacuum-priming	Options:
Head:	Highly efficient	<ul style="list-style-type: none"> • Skid frame • Silenced

Model	BBA BA80H	Axis HP400 150×100	Axis HP400 200×150
Max Flow (L/s)	56	70	188
Max Head (m)	90	100	100
Max Solids (mm)	25	16	30
Drive	Perkins	Perkins	Perkins
Weight (kg)	2100kg	1800kg	3050kg
Canopy/Skid	Silenced Enclosed	Mine Skid	Mine Skid
Application(s)	Dewatering	Dewatering	Dewatering

3" High Head Submersible Pumps

Our range of 3" High Head Submersibles are suited to dewatering applications with high elevations and long distances, with flows of up to 18 L/s. The Grindex model features run-dry technology and has a Star-delta starter built into the pump head.



Grindex Maxi SH

Max flow: 18 L/s	Head: 65 – 82m	Highly efficient
Weight: 1080kg – 3050kg	Drive: Electric (3ph)	Options:
Solids: 10mm	Diameter 283 - 354mm	
		<ul style="list-style-type: none"> • Float start/stop • Compatible with Prime Pump generators, soft-starters and VFD's

Model	Grindex SH 3"	Proril TANK 3"
Max Flow (L/s)	18	16 – 18
Max Head (m)	82	56 - 65
Max Solids (mm)	10	8 - 10
Drive	Electric 3ph	Electric 3ph
Power (kW)	10	8 - 11
Weight (kg)	98	92 - 135
Diameter	346	283 - 354

4" High Head Submersible Pumps

Our range of 4" High Head Submersibles are suited to dewatering applications with high elevations and long distances, where moderate flows and a high head is required.



Grindex Master SH

Max flow:

28 – 55 L/s

Weight:

133 – 985kg

Solids:

10 – 15mm

Head:

56 – 205m

Drive:

Electric (3ph)

Diameter

354 – 610mm

Highly efficient

Options:

- Float start/stop
- Run-dry (Grindex models only)
- Star-delta starter (some models)
- Compatible with Prime Pump generators, Soft-starters and VFD's

Model	Grindex H 4"	Proril TANK 4"
Max Flow (L/s)	45 - 55	28 - 32
Max Head (m)	68 - 205	56 - 70
Max Solids (mm)	12	10 - 15
Drive	Electric 3ph	Electric 3ph
Power (kW)	18 - 90	11 - 22
Weight (kg)	133 - 985	135 - 256
Diameter (mm)	395 - 610	354 - 424

6" High Head Submersible Pumps

Our range of 6" High Head Submersibles are suited to dewatering applications with high elevations and long distances, where moderate to high flows and head heights up to 102m are required.



Grindex Maxi

Max flow:

40 – 150 L/s

Weight:

510 – 900kg

Solids:

10 – 12mm

Head:

80 – 102m

Drive:

Electric (3ph)

Diameter

532 – 750mm

Highly efficient

Options:

- Float start/stop
- Run-dry (Grindex models only)
- Compatible with Prime Pump generators, Soft-starters and VFD's

Model	Grindex H 6"	Proril TANK 6"
Max Flow (L/s)	65 - 150	40 - 62
Max Head (m)	98 - 102	80 - 90
Max Solids (mm)	10 - 12	10
Drive	Electric 3ph	Electric 3ph
Power (kW)	57 - 90	37 - 45
Weight (kg)	540 - 900	510 - 530
Diameter (mm)	610 - 750	532

Sludge and Slurry Pumps



Air-operated Slurry Pumps

Our range of 100% air-operated pumps are designed for pumping solids and sludge up to 65mm in diameter. Their unique valve design and high-quality construction makes them reliable, efficient, and easy to operate. Solidsvac pumps are environmentally friendly and require minimal maintenance, making them a cost-effective solution. These pumps are ideal for a range of applications including drilling mud waste, abrasive slurries, slump slimes, mine tailings, and wet spills.



SolidsVac SV20

Max flow:
3.5 – 13.5 L/s

Drive:
50 – 330cfm

316 stainless steel tank and valves

Weight:
55 – 390kg

Low maintenance

Options:
• Adjustable cycle time

Solids:
35 – 50mm

No internal workings

Head:
70m

Model	SV20	SV70	SV150
Max Flow (L/s)	3.5	7	13.5
Max Head (m)	70	70	70
Max Solids (mm)	35mm	50mm	50mm
Drive	50 – 100 cfm	100 - 230 cfm	130 – 330 cfm
Weight (kg)	55	120	390
Canopy/Frame	Wheeled trolley	Wheeled trolley	Skid with fork pockets and lifting points

2" & 3" Submersible Slurry Pumps

Our range of electric slurry submersibles are specifically designed to pump abrasive, sludgy water effectively. With rugged cast-iron construction, they're built to withstand the difficult task of transporting slurry. These smaller model pumps are suited to applications where flow up to 28 L/s and heads up to 26m are required.



Proril 377-P

Max flow:
7 – 28 L/s

Drive:
Electric
(1ph and 3ph)

Some models handle up to 70% solids by weight

Weight:
17 – 220kg

Purpose built

Solids:
20 – 50mm

Rugged cast iron and abrasion-resistant construction

Head:
12 – 26m

Model	Grindex Sludge 2"	Grindex Sludge 3"	Proril STORMY 3"	Dragflow EL 3"
Max Flow (L/s)	7	13 - 16	20 - 28	20
Max Head (m)	12	16 - 26	15-21	13
Solids (mm)	38	46-50	25	20
Drive	Electric 1ph	Electric 1ph/3ph	Electric 3ph	Electric 3ph
Power (kW)	0.9	2.7-5.6	3.7 - 5.5	4.5
Weight (kg)	17	33 - 56	110 -123	220
Diameter (mm)	200	249- 320	385-420	400

4" Submersible Slurry Pumps

Our 4" range of Submersible Slurry Pumps will move abrasive, dirty or solids-laden water reliably. They are designed for ease of handling and maintenance, with some models converting between drainage and sludge as water quality changes. These models of pumps are suited to applications where flows of up to 100 L/s and 78m head are required.



Proril Stormy
475-P

Max flow:
24 – 100 L/s

Weight:
56 – 1000kg

Solids:
25 – 80mm

Head:
9 – 78m

Drive:
• Electric (3ph)
• Hydraulic

Purpose built

Rugged cast iron and abrasion-resistant construction

Options:
• High efficiency agitator
• Handles up to 70% solids by weight (Dragflow models only)

Model	Grindex Senior 4"	Proril STORMY 4"	Dragflow EL 4"	Dragflow HY 4"
Max Flow (L/s)	24	31 - 51	27 - 90	27 - 100
Max Head (m)	9	14-25	17-38	38-78
Max Solids (mm)	80	25	25-35	25-35
Drive	Electric 3ph	Electric 3ph	Electric 3ph	Hydraulic
Power (kW)	4.2	3.7-11	5.5 - 45	24-80
Weight (kg)	56	110-191	270-1000	220-600
Diameter (mm)	320	385-479	450-910	437-902

6" Submersible Slurry Pumps

Prime Pump's electric and hydraulic 6" Submersible Slurry Pumps are formidable workhorses. They will move dirty water with a solids content by weight of up to 70%, making short work of even the most over-laden settlement pond. This range is best suited to applications where flows of up to 125 L/s and 78m head are required.



Proril Stormy
6150-S

Max flow:
55 – 125 L/s

Weight:
191 – 1100kg

Solids:
25 – 60mm

Head:
21 – 78m

Drive:
• Electric (3ph)
• Hydraulic

Diameter:
479 – 902mm

Purpose built

Rugged cast iron and abrasion-resistant construction

Options:
• High efficiency agitator
• Handles up to 70% solids by weight (Dragflow models only)

Model	Proril STORMY 6"	Dragflow EL 6"	Dragflow HY 6"
Max Flow (L/s)	62-85	55-125	55-125
Max Head (m)	21-30	32-56	29-78
Max Solids (mm)	25-30	35-60mm	35-60
Drive	Electric 3ph	Electric 3ph	Hydraulic
Power (kW)	11-22	45-90	33-80
Weight (kg)	191-345	950-1100	530-700
Diameter (mm)	479-592	902-935	818-902

8" Submersible Slurry Pumps

Prime Pump's electric and hydraulic 6" Submersible Slurry Pumps are formidable workhorses. They will move dirty water with a solids content by weight of up to 70%, making short work of even the most over-laden settlement pond. This range is best suited to applications where flows of up to 125 L/s and 78m head are required.



Proril Stormy 8220-P

- | | | | |
|--|--|--|---|
| <p>Max flow:
110 – 222 L/s</p> <p>Weight:
367 – 1400kg</p> <p>Solids:
35 – 90mm</p> | <p>Head:
24 – 78m</p> <p>Drive:</p> <ul style="list-style-type: none"> • Electric (3ph) • Hydraulic <p>Diameter:
592 – 1165mm</p> <p>Purpose built</p> | <p>Rugged cast iron and abrasion-resistant construction</p> | <p>Options:</p> <ul style="list-style-type: none"> • High efficiency agitator to lift settled solids • Option to handle up to 70% solids by weight |
|--|--|--|---|

Model	Proril STORMY 8"	Dragflow EL 8"	Dragflow HY 8"
Max Flow (L/s)	110	152-222	111-194
Max Head (m)	24	30-78	43-63
Max Solids (mm)	35	35-60	60-90
Drive	Electric 3ph	Electric 3ph	Hydraulic
Power (kW)	22	45-90	65-120
Weight (kg)	367	1005-1400	700-1030
Diameter (mm)	592	902-1165	933-1165



Environmental

Settlement Tanks

Settlement tanks are widely used in dewatering applications to remove solids and other impurities from water getting discharged from site. Our settlement tanks have a compact and tidy design, enabling easy transportation and installation at the job site.



Settlement tank

One of the essential features of our settlement tanks is the inclusion of an oil separator. This feature ensures that the discharged water is free of oil and other floating materials, making them environmentally friendly.

Compact, tidy design

Oil / hydrocarbon separator

Lift points

Adaptable inlet & outlet fittings

Removable lid

for improved safety and to facilitate cleaning.

Available Sizes:
4 Cube
9 Cube
12 Cube
20 Cube

Lamella Clarifiers

EnviroHub Lamella Clarifiers are a type of sedimentation tank used for the clarification of water and wastewater. They are designed with a series of inclined plates or "lamellae" that increase the effective settling area within the tank, thereby reducing the area required on site.



Envirohub HL20

As the water flows through the tank, the suspended solids settle on the inclined plates and slide down to the bottom of the tank for removal. The clarified water then flows out of the top of the tank.

Solar-powered

Fast deployment

Small footprint

Site glass for monitoring sludge level

Intelligent-dosing units

Can operate in series

Pairs with pH correction or other settling units

Model	HL20	HL40	HL50
Max operational capacity:	20m ³ / hour	40m ³ / hour	50m ³ / hour
Dimensions LxWxH (m):	2.2 x 2.1 x 2.2	2.3 x 2.4 x 2.5	3.2 x 2.2 x 2.5
Weight (kg):	1500	2000	2300

Other Water Quality Services:

- pH correction
- Water quality monitoring (online and hand-held meters)
- Concrete washout



Generators

Prime Pump Generators are designed to be used alongside our range of electric pumps, ensuring they provide the lowest cost of operation. Our generators have extended range fuel tanks to reduce refueling frequency, and are set up to automatically start and stop from a float switch. The steel base and silenced canopies mean these generators can be used in any application. All generators feature silenced enclosures, multiple socket outlets and are remote monitoring capable.



Generator kW:
8kW to 70kW

Weight:
1050kg (Dry) to
1450kg (Dry)

**1 week+ refuel
cycle**

Options:

- Remote monitoring capable
- External fuel tank connections

Max Amps:
14A to 83A

Fuel Tank Size:
Up to 499L

Float start/stop
with warm up
and cool down
function.

Model	10kVA	25kVA	45kVA	88kVA
Generator kW	8kW	18kW	36kW	70kW
Max Amps	14A	29A	65A	83A
Outlets	3× 10A 1 phase & 1× 32A PDL	2× 10A 1 phase & 2× 50A PDL	2× 10A 1 phase & 2× 50A PDL	3× 10A 1 phase & 1× 32A PDL, 1× 63A & 125A C-form
Fuel tank size	499L	499L	499L	410L
Weight	1050kg (Dry)	1100kg (Dry)	1150kg (Dry)	1450kg (Dry)
Float Start/Stop	Yes	Yes	Yes	Yes

Accessories



Road and Driveway Ramps

Eliminate the hassle of maneuvering sheets of plywood over hoses and discharge pipes on your job site with these heavy-duty ramps. Designed to handle various types of vehicles and loads, these ramps provide a durable, practical, and safe solution for traffic control onsite.

These ramps come with easy-to-connect flanges that click and connect, making the installation process quick and effortless. With options available to suit 8" and 6" pipework, you can choose between a single or double ramp depending on your needs.

Simple Install

Max weight:
25,000kg axle load

Customizable Options

Built to last:
heavy-duty construction and materials

Improved Safety:

help prevent accidents and injuries on your job site

Wellpoints (PVC or Self-Jetting Steel)

Reliable, efficient, and quick to install – these Wellpoints are specifically designed to manage groundwater on site. To effectively lower the waterline, each Wellpoint is equipped with a 0.3mm perforation at the bottom, which extends 1m in length. This perforation allows water to be drawn out of the ground and into the filter, where it can then be pumped away from the site.

Two options available:

- Shock-resistant PVC.
- Steel – with a self-jetting option available.



Simple Install

Lengths from
2-8m

PVC or steel options

0.3mm screens to prevent sand & silt passing through

Strong and durable

Steel Wells

Our 6-inch dewatering wells are designed to remove groundwater or surface water from excavations, construction sites, or other underground structures – ensuring construction, maintenance or repair works can be carried out in a dry and safe environment. They are easy to install with an excavator, highly effective and ideal for stoney ground conditions.

Also available: jetting pumps, lance and trailer mounted jetting units.

Lifting points

Airline threads securely into place for developing wells.

6" Male Bauer connection

Will de-water to depth of 4m or 6m (depending on size of well).

Sizes available in 6":
4M
6M

Hoses and Pipes

Our hose options range from 1" to 12", with every size in between. All our hoses are engineered to handle even the most demanding conditions, so you can rest assured that your operation will run smoothly. Standard lengths for our rubber suction hose is 3m, HDPE pipe is 5.8m and our PVC lay flat is 25m. All our hose and pipe come standard with Bauer fittings, apart from 12" pipe which comes standard with IT type fittings.



Layflat hose

Suction or discharge
(10 bar rated)

Diameter:
2" – 12"

Length:
3m to 25m

Options:
PVC Lay Flat Hose, Rubber Suction Hose and HDPE Pipe

Suitable for every application:
HDPE is more durable and suited to pumping across rough ground where layflat hose may kink or become damaged

Hose Type:	Available Diameter (inches)	Available Lengths (meters)	Pressure Rating (Bar)
Layflat	2 - 8	25	6-10
Suction Hose	2 - 12	3 - 6	6-10
HDPE Pipe	4 - 12	5.8	6-10

Sewer Plugs

Prime Pumps stock a quality range of sewer plugs, ranging from 150mm-2m. These are suitable for many applications, with blocking or bypass options available.



150mm - 2m

Bypass or blocking options available

All come fitted with pressure gauges

6m inflation rope

Sound Barriers

Looking to reduce noise on site? Check out our trusted Hustec Performance Series. With sound mats available to minimise the noise of pumps and generators, this will be your go-to for operating in residential areas.

Velcro and eyelets for easy attachment

Attach to temporary fencing

Simple installation

Highly effective for reducing noise

Fittings and Adapters

Prime Pump stock a wide range of fittings and adaptors. With sizes available from 2" - 12", you'll find an option to suit every application. We can also mix and match, and provide customised adapters on request as needed.



Suction Strainers

Camlock & Bauer Adapters

Flow Meters

90 & 45degree Bends

End Caps & Plugs

Flange - Bauer Adapters

Reducers & Increases

T & Y Junctions

Valves

Fuel Tanks

We stock a high-quality range of compact and portable fuel tanks, designed to provide a safe and reliable storage solution for fuel on site. Our tanks can also be connected to pumps to extend their re-fuelling cycles.



Size range: 2000L to 4000L

Safe to use: all tanks comply with Hazardous Substance regulations.

Extends re-fuelling cycle time

Lockable and secure

GREYMOOUTH

Head office: 10 Chesterfield St

AUCKLAND

13b McLaughlins Rd, Wiri

TAURANGA

43 Poturi Street, Tauriko

PORIRUA

2a Raiha St, Elsdon

CHRISTCHURCH

Unit c1, 198 Springs Rd, Hornby

HAWKES' BAY

97 Austin Street, Onekawa, Napier

0800 482 747

info@primefluid.co.nz



Expertise • Equipment • Results