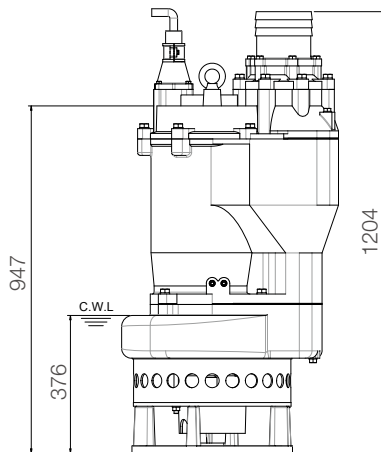
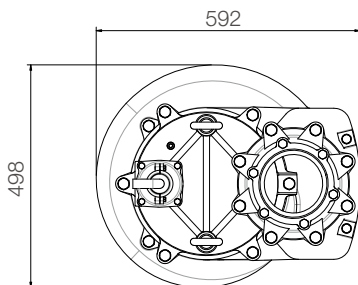


# Stormy 6220P

## Open Stand and Agitator Pump 50HZ

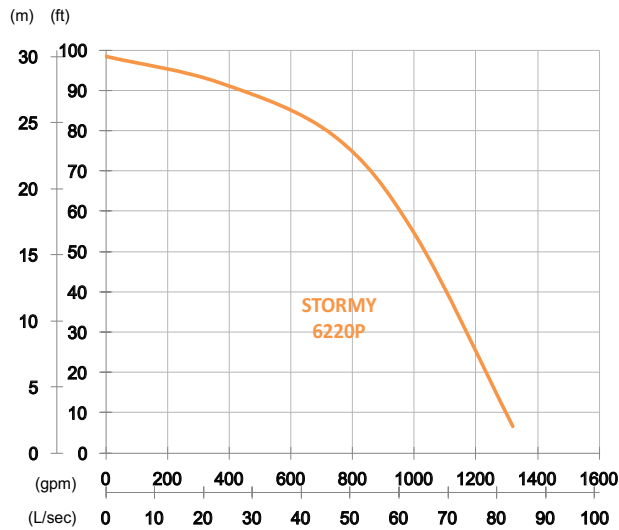


unit : mm

Weight : 345kg

### Pump specifications

OUTPUT	HEAD	FLOW
22kW	Rated : 24m, 79ft	Rated : 46.6 L/s, 739 gpm
30HP	Max : 30m, 99ft	Max : 83.3 L/s, 1320 gpm
<b>SHAFT SPEED</b>		1450rpm
<b>OUTLET</b>		150mm, 6in
<b>SOLID PASSAGE</b>		30mm, 1.2in



### Features

#### Pump Type

Electric Submersible Pumps  
 3-Phase

#### Motor

Type: Induction Motor  
 Poles: 4 Pole  
 Insulation: Class F  
 Protector: Circle Thermal Protector  
 Starter: D.O.L.

#### Lubricant

Food Grade (ISO VG32)

#### Impeller Type

Opened

#### Shaft Seal

Double Mechanical Seal  
 Silicon Carbide VS Ceramic / Carbon

#### Bearings

C3 Shielded ball bearings

#### Cable

PVC (CSA Certified) / H07BQ-F  
 10m or longer upon request

#### Materials

Pump Casing: Ductile Iron  
 Impeller: Chromium Iron  
 Motor Frame: Gray Iron  
 Motor Shaft: Stainless Steel  
 Wear Plate: Chromium Iron  
 Agitator: Chromium Iron

#### Max. Liquid Temperature

40°C

#### Max. Submersion Depth

20m

#### pH Range

pH 5 - pH 8