

Thermoplastic Magnetic Drive Pumps

AM, AMX, AMXi, AMA, AME, AVF Ranges



Magnetically Driven Leak Free Design

- Sealless design
- Chemically Resistant
- Reinforced Rugged Design
- ISO2858, 5199, 2084, 3661
- 24 Month Warranty with Optional 5 YEAR WARRANTY ATEX Certified
- Patented Dry-run Design*
- Patented Buffer System
- One-piece Impeller and Magnet for Reliability* AME Range

Pumps Available in Various Materials

- Polypropylene – PP with Glass Fibre reinforced Casing
- Ethylene tetrafluoroethylene – ETFE with Carbon Fibre reinforced Casing or ETFE Lined Perfluoroalkoxy alkanes – PFA Lined



AM Range

Thermoplastic Mag Drive Pumps



Features

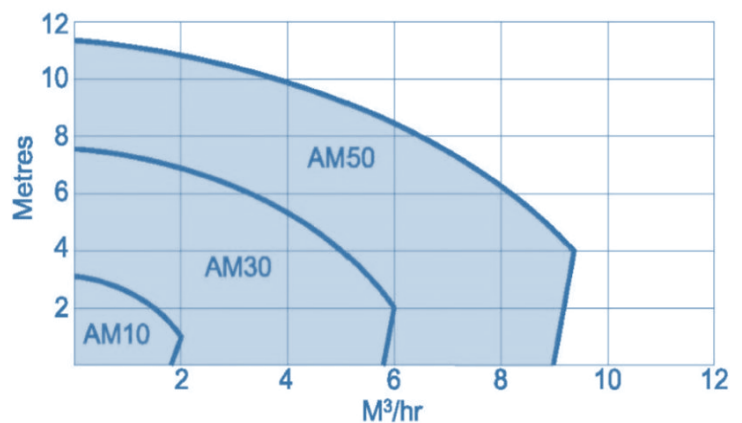
- Materials: Polypropylene, ETFE
- SiC, Carbon, PTFE Bearings
- Low Maintenance Design



Specifications

Range Overview	
Flow	9m ³ /hr. max
Head	11m. Max
Temp.	80°C PP / 95°C ETFE.

- Close-Coupled
- 3 models available
- 2/3 impeller sizes per model
Discharge ports – ½" to 1"
0.12kW to 0.25kW
- 2-pole
- Atex Zone 1 / 2 Certified



AMX Range

Thermoplastic Mag Drive Pumps



Features

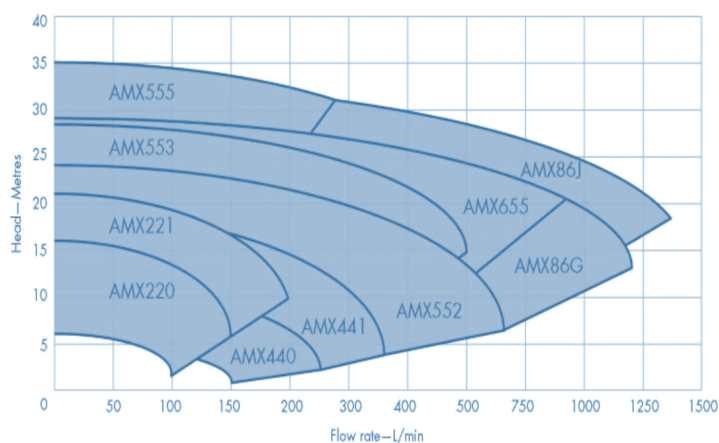
- Materials: Polypropylene, ETFE
- Maintenance Free Casing and Adjustable Flange System
- Pump Protection Buffer System - Vibration and Shock Absorbing
- Run-dry system with Carbon/Ceramic Internals*



Specifications

Range Overview	
Flow	80m ³ /hr. max
Head	35m. Max
Temp.	80°C PP / 95°C ETFE.

- Close-Coupled
- 13 models available
- 3 impeller sizes per model
Discharge ports – ½" to 2½"
0.37kW to 7.5kW
- 2-pole
- Atex Zone 1 / 2 Certified



AMXi Range

Thermoplastic Mag Drive Pumps



Features

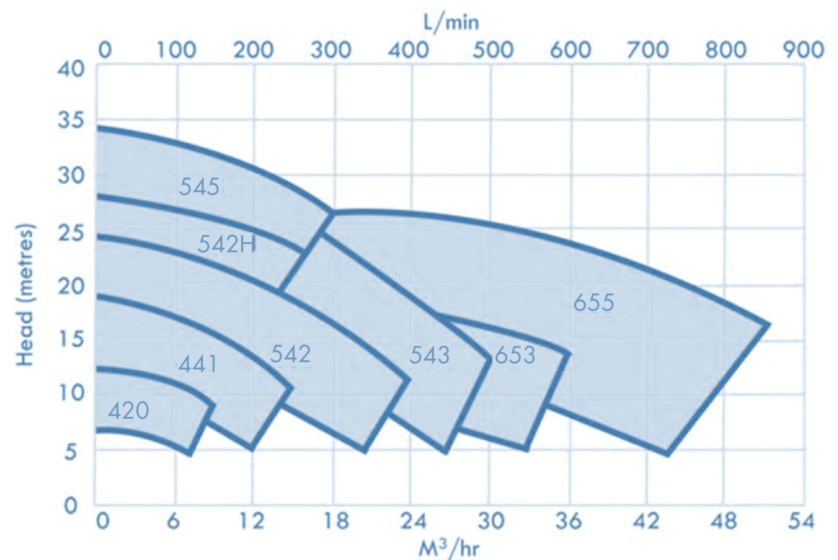
- Materials: Carbon Fiber reinforced ETFE lining with Ductile Iron Armor Heavy Duty Rugged Design
- Pump Protection Buffer System – Vibration and Shock Absorbing
- Run-dry system with Carbon/Ceramic Internals*



Specifications

Range Overview	
Flow	48m ³ /hr. max
Head	35m. Max
Temp.	95°C ETFE Lined

- Close-Coupled
- 7 models available
- 3 impeller sizes per model
Discharge ports – 1" to 2"
0.37kW to 4kW
- 2-pole
- Atex Zone 1 / 2 Certified



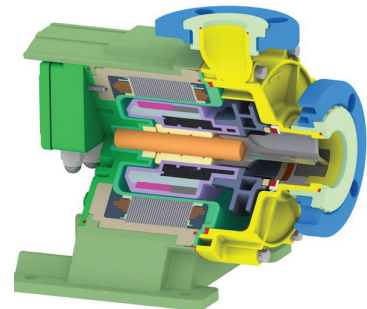
AVF Range

Thermoplastic Mag Drive Pumps



Features

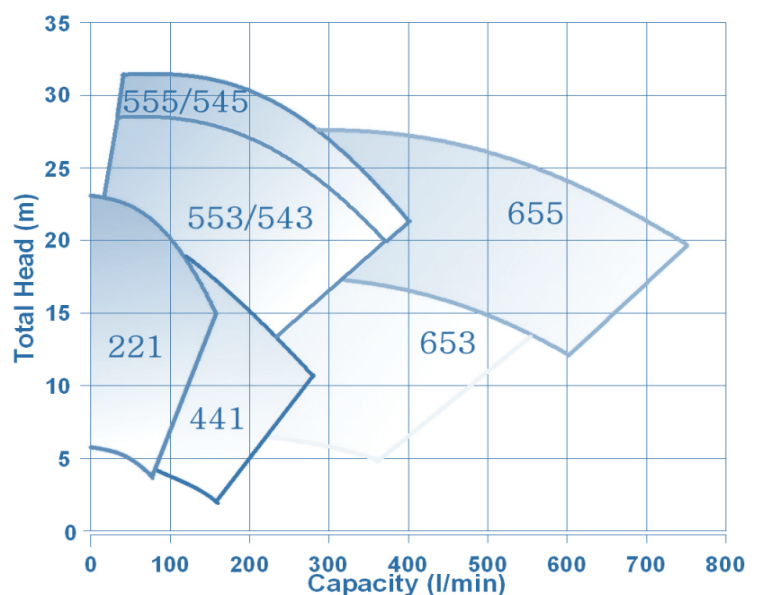
- Materials: Polypropylene, ETFE
- High Efficient Canned Motor Design
 - No losses via. Magnetic Coupling –
 - The Motor Stator is the Magnetic Drive
 - Must be used with Inverter Drive
- IP66 Rated Design with Silent Fan Less Motor – Compact Design
- Up to 20% more Efficient & up to 50% Less Power Consumption – Exceeds IE4 and IE5 efficiency.



Specifications

Range Overview	
Flow	84m ³ /hr. max
Head	35m. Max
Temp.	80°C PP / 95°C ETFE

- Integral Coupled
- 3 models available
- 2/3 impeller sizes per model
Discharge ports – ½" to 1"
0.12kW to 0.25kW
- 2-pole
- Safe Area only



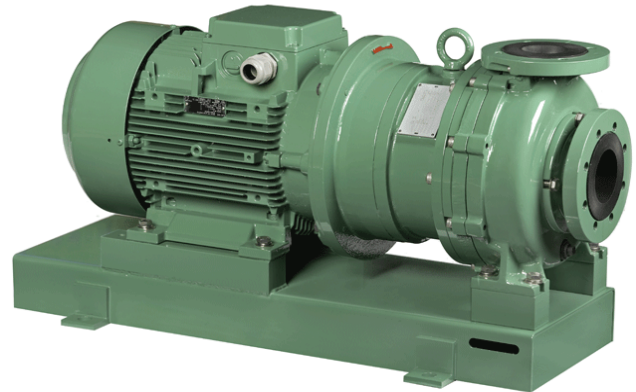
AMA Range

Thermoplastic Mag Drive Pumps



Features

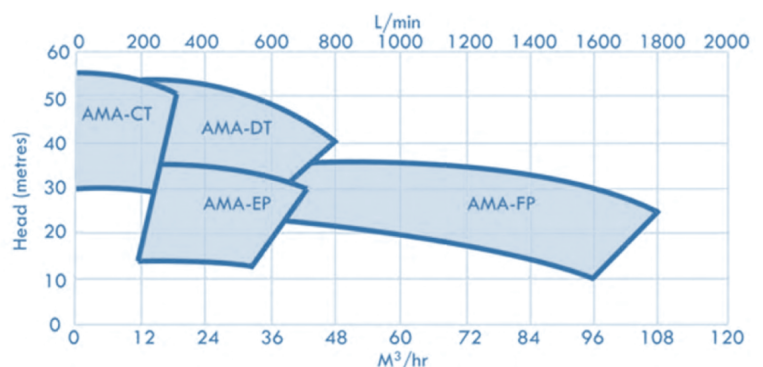
- Materials: Carbon Fibre reinforced ETFE lining with Ductile Iron Armor
- Heavy Duty Rugged Design
- Pump Protection Buffer System – Vibration and Shock Absorbing* CT & EP Models.
- Run-dry system with Carbon/Ceramic Internals*



Specifications

Range Overview	
Flow	108m ³ /hr. max
Head	60m. Max
Temp.	95°C

- 4 models available
- 3 impeller sizes per model
Discharge ports – 1½" to 2½"
- 5.5kW to 18.5kW
- 2-pole
- Atex Zone 1 / 2 Certified



AME Range

Thermoplastic Mag Drive Pumps



Features

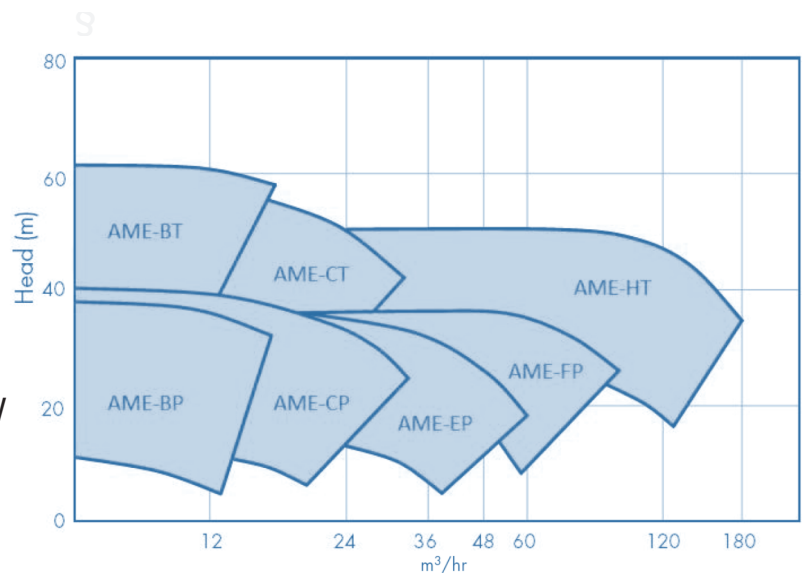
- Materials: High Purity PFA Lined with Ductile Iron Armor
- Heavy Duty Rugged Design
- Dual Shaft Reinforced Support
- Single Piece Impeller with and Magnet Capsule – With Reinforced Impeller
- High Temperature
- Factory Order – Fast Lead Times



Specifications

Range Overview	
Flow	180m ³ /hr. max
Head	50m. Max
Temp.	150°C

- 7 models available
- 3 impeller sizes per model
Discharge ports – 1" to 3" 1.5kW to 30kW
- 2-pole
- Atex Zone 1 / 2 Certified



Available in New Zealand from:

Prime Fluid Management

Head Office: 10 Chesterfield St

Greymouth, West Coast

0800 482 747

primefluid.co.nz

